

*Scheherazade* by Nikolai Rimsky-Korsakov

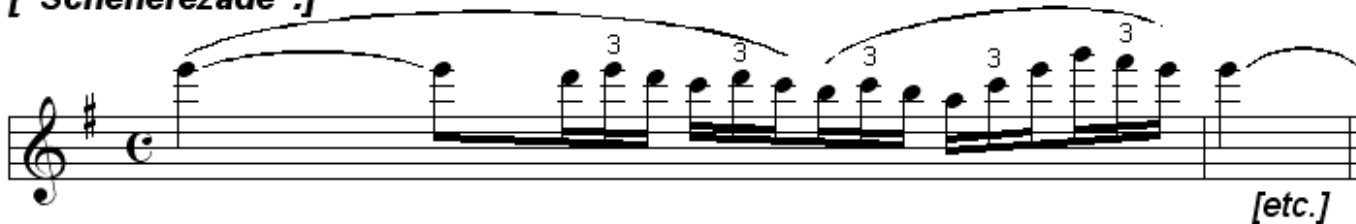
Rimsky-Korsakov composed a piece called *Scheherazade*, based on the story of the *1001 Arabian Nights*. The piece opens with two musical themes, or ideas, that represent the ruthless Sultan (King Shahrayar) and the master storyteller (Scheherazade). The beginning of each theme is notated below.

## Opening Themes

### ["The Sultan":]



### ["Scheherazade":]



1. What type of notes are in measure 1 of the Sultan's theme (whole, half, quarter or eighth notes)?
2. What type of notes is the first note in Scheherazade's theme (whole, half, quarter or eighth)?
3. The Sultan's theme is written in bass clef. Find the bass clef sign and circle it.
4. Scheherazade's theme is written in treble clef. Find the treble clef sign and circle it.
5. Which theme has accented (stressed) notes? What measure?
6. Each theme has a key signature with one accidental. The key signature is always written right after the clef sign. Find the key signature on both lines of music – is the accidental a flat or sharp?
7. Dynamic markings tell musicians how loud or soft to play. They are usually written below the staff and notes. Do either of these themes have a dynamic marking? Where is it and what does it mean?
8. What are the time signatures at the beginning of each theme?

