



BUFFALO  
PHILHARMONIC  
ORCHESTRA

499 Franklin Street  
Buffalo, NY 14202

**YOUR GUIDE TO THE**

**BPO** 2013-14  
S E A S O N

**TICKETS ON SALE NOW!**  
Subscription packages with great seats still available.  
**Call 716-885-5000 | [bpo.org](http://bpo.org)**



JoAnn Falletta

PHOTO: MARK DELLAS

NON PROFIT ORG  
U.S. POSTAGE  
**PAID**  
BUFFALO, NY  
PERMIT NO. 3032

BUFFALO PHILHARMONIC ORCHESTRA

**BPO** 2013-14  
S E A S O N



PHOTO BY BIFF HENRICH/IMG\_INK

S E A S O N G U I D E

When the  
BPO succeeds,  
we all succeed.

At M&T Bank, we know how important it is to support artists of all kinds. They enhance the quality of life in our communities. That's why we offer both our time and resources and encourage others to do the same.



mtb.com ©2012 MGT Bank. Member FDIC.

## WELCOME TO THE 2013-14 BPO SEASON!

As music director of the Buffalo Philharmonic Orchestra, I relish the opportunity to bring wonderful repertoire to Western New York. The BPO is your orchestra, and we love performing the music you want to hear. In this guide to the 2013-14 season, you'll find all of the information you need to enjoy each concert experience to the fullest.

When developing a season, the audience is always our first consideration. What composers and artists have you fallen in love with? Are there new pieces that Western New York will love, or lesser-known works that will find champions among the Buffalo Philharmonic's audience? What great pieces have we not played for you before? What major works could you hear again and again? The result is a carefully crafted season, filled with classical masterworks, hidden gems, bold new music, favorite performers, and rising stars.

The BPO truly offers something for everyone. We're presenting cutting-edge pieces like Jennifer Higdon's percussion concerto and the world premiere of a tango-flavored concerto for cello. If you've never heard Beethoven's Fifth Symphony or Tchaikovsky's "Pathétique" Symphony live, this season offers you an opportunity to do so. On the Pops series, we're welcoming many legends in their respective fields: Bernadette Peters, Chris Botti, and Doc Severinsen. We also offer fantastic concerts for our youngest fans in our BPO Kids series – it's a great way for parents and grandparents to start children on the path to enjoying classical music for a lifetime. BPO Rocks! combines classic rock stars and hits with this very talented orchestra. And, if you are looking for an opportunity to learn more about the music and meet and mingle with members of the BPO – check out Know the Score.

Last season, the orchestra was proud to perform to stellar reviews at the *Spring For Music* festival at Carnegie Hall. We're eager to come home and show you what we have in store for this season. We hope you join us for an exciting year.

Sincerely,  
JoAnn Falletta

BPO Administrative Offices  
499 Franklin St.  
Buffalo, NY 14202  
(716) 885-0331  
bpo.org

Kleinhans Music Hall  
(716) 883-3560  
kleinhansbuffalo.org

Check out  
Your BPO online!



JoAnn Falletta

PHOTO: CHERYL GORSKI

## History of the Buffalo Philharmonic Orchestra

As Buffalo's cultural ambassador, the Grammy Award winning Buffalo Philharmonic Orchestra under Music Director JoAnn Falletta presents more than 120 Classics, Pops and Youth Concerts each year.

The BPO has toured widely across the United States and Canada. In May 2013, they performed at Carnegie Hall as a participant in the prestigious *Spring for Music* festival. In February 2014, they will once again tour Florida.

The BPO was founded in 1935. Before Kleinhans was built, they performed most often at the Elmwood Music Hall, located at Elmwood Ave. and Virginia St., and demolished in 1938. During the Great Depression, the orchestra was supported by funds from the Works Progress Administration and the Emergency Relief Bureau. Over the decades, the orchestra has matured in stature under the batons of some of the leading stars of the podium. William Steinberg, Josef Krips, Lukas Foss, Michael Tilson Thomas, Maximiano Valdes, Semyon Bychkov and Julius Rudel are among the luminaries who have served as music directors of the Buffalo Philharmonic. The orchestra has welcomed many notable guest performers and conductors, including Isaac Stern, Aaron Copland, Van Cliburn and Igor Stravinsky.

In 2004, the BPO launched the JoAnn Falletta International Guitar Concerto Competition in partnership with WNED. The biennial competition draws entrants from all over the world who compete publicly for cash prizes, a recording contract, and a return engagement with the orchestra. In June 2014, the BPO will again host the worlds most talented classical guitarists.

## About Kleinhans Music Hall

Since 1940, the orchestra's home has been Kleinhans Music Hall, a National Historic Landmark with an international reputation as one of the finest concert halls in the United States. Kleinhans is considered one of the most acoustically perfect halls in the world.

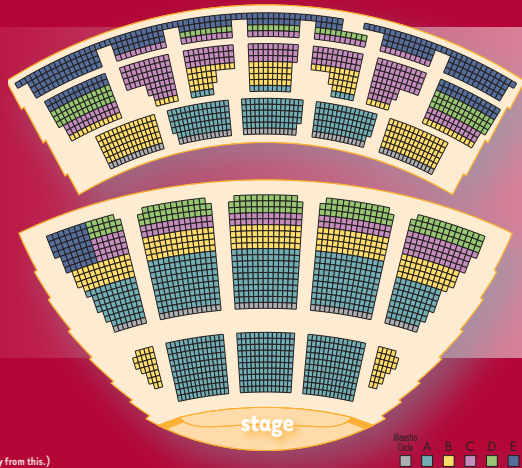
Kleinhans Music Hall was built thanks to the generosity and vision of Edward and Mary Seaton Kleinhans and the stewardship of their charitable dreams by the Community Foundation for Greater Buffalo. The Community Foundation was bequeathed the estates of Mr. and Mrs. Kleinhans, who made their fortune from the clothing store that bore their name, and who died within three months of each other in 1934.

The couple specified that their money was to be used "to erect a suitable music hall...for the use, enjoyment and benefit of the people of the City of Buffalo." The BPO performed at Kleinhans Music Hall's official opening on Oct. 12, 1940.

Kleinhans Music Hall was designed by the Finnish father-and-son team of Eliel and Eero Saarinen, along with architects E.J. and W.A. Kidd. The hall's design resembles the body of a string instrument, as does the main auditorium. Eliel Saarinen's aim was to create "an architectural atmosphere...so as to tune the performers and the public alike into a proper mood of performance and receptiveness, respectively." In 1989, the hall was designated a National Historic Landmark, the highest designation of significance a site or structure can receive.



KLEINHANS  
MUSIC  
HALL  
SEATING  
CHART



Pops Seating Chart.  
(Other series vary slightly from this.)

Maestro Circle  
A B C D E

	MAESTRO CIRCLE	A	B	C	D	E
Classics   Pops	\$76	\$65	\$52	\$41	\$34	\$28
Premium Classics   Pops	\$79	\$70	\$58	\$46	\$39	\$33
Coffee Concerts	\$52	\$52	\$42	\$42	\$32	\$32
BPO Rocks	\$62	\$52	\$42	\$42	\$32	\$32
Chris Botti   Bernadette Peters	\$95	\$85	\$73	\$63	\$52	\$43
Yo-Yo Ma	\$125	\$95	\$85	\$75	\$65	\$55
Gordon Lightfoot	\$75	\$65	\$55	\$45	\$35	\$35
The Chieftains	\$85	\$57	\$46	\$46	\$35	\$35
Guitar Competition Finals	\$76	\$65	\$52	\$41	\$41	\$41
BPO Kids	Adults	\$12		Children	\$7	
BPO Kids Jingle Bell Jam	Adults	\$20		Children	\$13	
Know the Score	General Admission	\$25		Students	\$10	

Premium Concerts = ABBA: The Hits!, Doc Returns!, Vivaldi's Four Seasons, Classic Christmas, Holiday Pops, Mendelssohn's Violin, Classical Mystery Tour, Beethoven's Fifth, Russian Rhapsody [\$5 fee for subscriber exchanges.]

NOTE: No exchanges for: Yo-Yo Ma, Bernadette Peters, Gordon Lightfoot, Chris Botti, The Chieftains, Canisius College Concert, BPO and Neglia Ballet, Handel's Messiah, Holiday Concert at Hilbert College, Side-By-Side Events, Earshot Composer Workshop, BPO Nation or any Non-BPO events.

Seating sections subject to change based on event.  
Please visit BPO.org or call the Box Office for specific seat pricing information.

**Season packages are still available and on sale now!**

**First-time subscribers to the Classics and Pops save up to 50% off single ticket prices.**

**Excellent seats are still available. Subscribers are Special!**

**Besides experiencing the excitement of a live performance, being part of the BPO Subscriber family affords you many great benefits:**

- Friendly, knowledgeable Box Office and Subscription staff to personally assist you.
- The most flexible ticket exchange program in WNY; it's easy to exchange tickets!
- The best seats in the house – you may keep or improve your seats year after year.
- Order additional tickets and tickets to special events before the general public.
- Significant savings on handling fees by ordering a package rather than individual concerts.
- Special subscriber-only recognition events.
- Only subscribers receive the terrific BPO Perks package of discounts at area merchants.

All concerts are on sale NOW so select a series or the concerts of your choice.

**Call 716-885-5000 or visit bpo.org**

## Ticket Sales Information

**BOX OFFICE** The BPO Box Office is located inside Kleinhans Music Hall, at the Porter Ave. entrance. The Box Office is open Monday through Friday from 9AM to 6PM and Saturdays from 9AM to 1PM. For Saturdays with events, the Box Office is open until the intermission. For Sundays with events, the Box Office is open from noon until the intermission. These hours are subject to change. Please call (716) 885-5000 for the most up-to-date information.

**ONLINE** Visit [www.bpo.org](http://www.bpo.org) to order tickets using Mastercard, Visa, American Express or Discover. Online ticket orders made one week or more in advance of an event will be mailed to the specified address. Tickets ordered the week of the event will be held at Will Call, located on the Porter Ave. side of Kleinhans.

**BY PHONE** Tickets may be purchased by phone with Mastercard, Visa, American Express or Discover. Call (716) 885-5000.

**AT THE DOOR** Tickets may be purchased prior to each performance at the Box Office window.

**GIFT CERTIFICATES** The BPO offers gift certificates valid towards tickets, subscriptions, CDs and more! Gift certificates can be ordered in any amount, and they never expire. Call the Box Office at (716) 885-5000 or come to Kleinhans to order.

**STUDENT TICKETS** Season passes are available for just \$29 and can be used for most Classic concerts. Some exclusions apply. Student tickets are also available for many single events; review the schedule and call the Box Office or stop by to order. A valid student identification card is required to purchase or pick up the ticket, and there is a limit of one ticket per card user. If you are a high school student, check out our Symphony Scholars program. Take a look at the education section at [bpo.org](http://bpo.org) for complete details.

Single ticket sales are final. Sorry, we cannot offer refunds or exchanges on single ticket purchases.

**Subscribe TODAY for best seats!**

Wed. Sept. 18, 8PM

M&T BANK CLASSICS

OPENING NIGHT GALA SPONSORED BY THE  
LOUIS P. CIMINELLI FAMILY FOUNDATION

**AN EVENING WITH  
Yo-Yo Ma**

JoAnn Falletta, *conductor*  
Yo-Yo Ma, *cello*

STRAVINSKY The Firebird Suite (1911)  
OSVALDO GOLLOJIV Azul



Yo-Yo Ma

Sat. Sept. 21, 8PM

BPO ROCKS

**THE MUSIC OF QUEEN**

Brent Havens, *conductor*

Celebrate the legacy of one of the most innovative bands in the history of rock with conductor Brent Havens and your BPO.

Sun. Sept. 22, Time TBD

**BPO AT  
BUFFALO RIVERFEST PARK**

249 Ohio Street

Free concert! Buffalo's most iconic musical ensemble performs in one of Buffalo's newest parks.

Sat. Sept. 28, 8PM

BLUECROSS BLUESHIELD POPS

OPENING NIGHT AT THE POPS  
SPONSORED BY CATHOLIC HEALTH

**BERNADETTE PETERS**

Matthew Kraemer, *conductor*

The 2013-14 Pops series opens with Broadway's brightest star! You've heard her albums, you've seen her on hit TV shows from *The Carol Burnett Show* to *Smash*, now see the legendary Bernadette Peters in concert with your BPO.

Fri. Oct. 4, 10:30AM

Sat. Oct. 5, 8PM

M&T BANK CLASSICS

**FALLETTA AND BRAHMS**



Vadim Gluzman

JoAnn Falletta, *conductor*  
Vadim Gluzman, *violin*

BARBER Medea's Meditation  
and Dance of Vengeance

BRUCH Concerto No. 1 for Violin

BRAHMS Symphony No. 1

Thurs. Oct. 10, 7PM

KNOW THE SCORE

**ROMEO AND JULIET**

Paul Ferington, *conductor*

Shakespeare's universal love story has been portrayed in music by composers throughout the centuries. This concert explores the power of the most famous musical versions of *Romeo and Juliet*, including those by Tchaikovsky, Prokofiev, and Bernstein. Presented in partnership with Buffalo's theatre community.



Bernadette Peters

Sat. Oct. 12, 8PM

BLUECROSS BLUESHIELD POPS

**ABBA: THE HITS!**

Matthew Kraemer, *conductor*

Returning to the BPO after their sold-out concert three years ago, the music of the ever-popular band of the 70s rocks Kleinhans! Hear the songs that inspired the hit musical and movie *Mamma Mia* as only your BPO can perform them.

Sat. Oct. 19, 8PM

Sun. Oct. 20, 2:30PM

M&T BANK CLASSICS

**MOZART'S  
MAGIC CLARINET**



Ricardo Morales

JoAnn Falletta, *conductor*  
Ricardo Morales, *clarinet*

RAVEL Mother Goose Suite

MOZART Clarinet Concerto

BARTÓK Suite No. 1

Fri. Oct. 25, 8PM

**GORDON LIGHTFOOT  
AND HIS BAND IN CONCERT**

Fri. Oct. 25, 10:30AM

Sat. Oct. 26, 8PM

BLUECROSS BLUESHIELD POPS

**DOC RETURNS!**



Doc Severinsen

America's most beloved band leader and former BPO pops conductor Doc Severinsen returns to Buffalo with several of his closest friends for an evening of music spanning his illustrious career.

Sun. Oct. 27, 2:30PM

**BPO KIDS  
SYMPHONIC  
SPOOKTACULAR**

Matthew Kraemer, *conductor*

Wear your Halloween costume and enjoy some of the spookiest music ever composed. Don't miss the costume parade. Guaranteed to be a howling good time!

*First time Classics and Pops subscribers save up to 50% off single ticket prices.*

Sat. Nov. 2, 8PM  
Sun. Nov. 3, 2:30PM  
M&T BANK CLASSICS

**LEGENDARY WAGNER**



Arild Remmereit, *conductor*  
Yakov Kasman, *piano*  
WAGNER Prelude and Liebestod,  
*Tristan and Isolde*  
WAGNER Prelude, Act III,  
*Tristan and Isolde*  
WAGNER Prelude, *Parsifal*  
PROKOFIEV Piano Concerto No. 2

Fri. Nov. 8, 8PM  
BPO ROCKS

**THE MUSIC OF THE ROLLING STONES**

Brent Havens, *conductor*  
Brent Havens leads the BPO in a raucous performance of music from rock's ultimate rebels.

Sat. Nov. 9, 8PM  
BLUECROSS BLUESHIELD POPS

**ONE SINGULAR SENSATION: A TRIBUTE TO MARVIN HAMLISCH**

Matthew Kraemer, *conductor*  
They're playing your songs! Remember *The Way We Were* with this tribute to former BPO pops conductor and composer Marvin Hamlisch, featuring his hits from the stage and silver screen, including *Nobody Does it Better*, Theme from *Ice Castles*, and your favorites from *A Chorus Line*.

Sat. Nov. 16, 8PM  
Sun. Nov. 17, 2:30PM  
M&T BANK CLASSICS

**VIVALDI'S FOUR SEASONS**

Carlos Miguel Prieto, *conductor*  
Anne Akiko Meyers, *violin*  
DE FALLA El Amor Brujo Suite  
HAYDN Symphony No. 96, "Miracle"  
VIVALDI Four Seasons

Fri. Nov. 22, 10:30AM

Sat. Nov. 23, 8PM  
M&T BANK CLASSICS

**BARTÓK AND BEETHOVEN**



JoAnn Falletta, *conductor*  
Simone Dinnerstein, *piano*  
ENESCO Rumanian Rhapsody No. 1  
BARTÓK Two Portraits  
BARTÓK Kossuth  
BEETHOVEN Piano Concerto No. 2



Marvin Hamlisch



Photo by [unreadable]

Sat., Nov. 30, 7PM  
Sun. Dec. 1, 2PM  
NEGLIA BALLET

**THE NUTCRACKER BALLET AT SHEA'S**

The BPO, Shea's, and Neglia Ballet Artists will join forces to present the traditional kickoff to the holiday season with Tchaikovsky's beloved ballet.

For tickets: visit [www.sheas.org](http://www.sheas.org) or call 1-800-745-3000.

Tues. Dec. 3, 7:30PM  
**HOLIDAY CONCERT AT HILBERT COLLEGE**

Matthew Kraemer, *conductor*  
Tickets \$30  
Call (716) 926-8884.

Sun, Dec. 1, 8PM

Location TBD  
*conductor* TBD

**BUFFALO PHILHARMONIC CHORUS PRESENTS HANDEL'S MESSIAH**

Fri. Dec. 6, 10:30AM

Sat. Dec. 7, 8PM  
M&T BANK CLASSICS

**CLASSIC CHRISTMAS**

Ron Spigelman, *conductor*  
Buffalo Philharmonic Chorus  
The Castellani Andriaccio Guitar Duo  
A concert of timeless music that celebrates the spirit of the season.

Sun. Dec. 8, 2:30PM  
**BPO Kids**

**JINGLE BELL JAM**

Come home for the holidays to historic Kleinhans Music Hall. Sing along with the orchestra, visit with Santa and get into the holiday spirit with your whole family.

Fri. Dec. 13, 10:30AM | 8PM

Sat. Dec. 14, 8PM

Sun. Dec. 15, 2:30PM  
BLUECROSS BLUESHIELD POPS

**HOLIDAY POPS**



JoAnn Falletta, *conductor*  
Buffalo Philharmonic Chorus  
Deck the halls for Holiday Pops! JoAnn Falletta conducts your BPO and the Buffalo Philharmonic Chorus in a concert that's become Western New York's most cherished holiday tradition.

Sat. Dec. 14, 1PM  
M&T BANK BUFFALO  
1 FOUNTAIN PLAZA

**HOLIDAY MUSIC UNDER THE DOME**

Paul Ferington, *conductor*  
The BPO performs a free concert of holiday favorites in an iconic Buffalo landmark.



Philippe Bianconi

**Fri. Jan. 17, 10:30AM**

**Sat. Jan. 18, 8PM**

M&T BANK CLASSICS

**AMADEUS**

JoAnn Falletta, *conductor*  
 Enrica Ciccarelli, *piano*  
 Jonathan Boyd, *bass-baritone*  
 Darren Stokes, *tenor*

MOZART Piano Concerto No. 24  
 RIMSKY-KORSAKOV Mozart and Salieri  
 IBERT Hommage a Mozart

**Thurs. Jan. 23, 7PM**

KNOW THE SCORE

**COPLAND'S AMERICA**

Stefan Sanders, *conductor*

Aaron Copland created a never before heard 'American' sound in music when he wrote such iconic pieces as Billy the Kid, Rodeo, Fanfare for the Common Man and Appalachian Spring. With images from American artists and original choreography from Lehrer Dance, this program sheds light on how Copland created his American musical language.

**Sat. Jan. 25, 8PM**

BLUECROSS BLUESHIELD POPS

**CIRQUE MUSICA**

Matthew Kraemer, *conductor*

Cirque Musica and your BPO blend the thrills and grace of the circus with the majesty and beauty of music. Be transported to a place of wonder as the world's best circus performers add a new dimension to your favorite music.

**Sat. Feb. 1, 8PM**

**Sun. Feb. 2, 2:30PM**

M&T BANK CLASSICS

**BIANCONI PLAYS RACH 3**

JoAnn Falletta, *conductor*  
 Philippe Bianconi, *piano*  
 DVOŘÁK Symphony No. 6  
 RACHMANINOFF Piano Concerto No. 3

**Tues. Feb. 4, 7:30PM**

MONTANTE CULTURAL CENTER

**CANISIUS COLLEGE**

JoAnn Falletta, *conductor*  
 Michael Ludwig, *violin*  
 Canisius College Choral  
 Frank Scinta, *director*

BACH Brandenburg Concerto No 3  
 DARON HAGEN Concerto for Violin and Orchestra: Songbook  
 CARMEN Aquila Serenade for String Orchestra  
 VIVALDI Beatus Vir  
 GRIEG Holberg Suite

CALL (716) 888-2536 FOR TICKETS.



**FLORIDA FRIENDS TOUR**

**Fri. Feb. 7, 7PM**

St. Augustine, *Flagler College*

**Sat. Feb. 8, 7PM**

Daytona Beach, *Peabody Auditorium*

**Sun. Feb. 9, 8PM**

West Palm Beach, *Community Church of Vero Beach*

**Mon. Feb. 10, 2PM**

West Palm Beach, *Kravis Center*

**Tues. Feb. 11, 7:30PM**

Vero Beach, *Indian River Concert Association*

**Wed. Feb. 12, 7:30PM**

Gainesville, *University of Florida*

The BPO returns to Florida for a five-city tour. The Feb. 10 concert features JoAnn Falletta and your BPO perform Dvořák's Symphony No. 6 and Rachmaninoff's Piano Concerto No.3 with pianist Phillippe Bianconi.

**Sat. Feb 15, 8PM**

BLUECROSS BLUESHIELD POPS

**THE BARBRA STREISAND SONGBOOK WITH ANN HAMPTON CALLAWAY**



Matthew Kraemer, *conductor*  
 Singer-songwriter Ann Hampton Callaway's critically-acclaimed tribute to Barbra Streisand lights up the stage. Callaway captivates with her interpretation of music from *Yentl*, *Funny Girl* and *A Star Is Born*, as well as *I've Dreamed of You*, written by Callaway for Streisand to sing to James Brolin on their wedding day.



**Sun. Feb. 16, 2:30PM**

**BPO KIDS**

**Up, Up and Away**

Matthew Kraemer, *conductor*  
 Musical fun that's out of this world! From *Star Wars* to music from the movie *UP*, this concert is all about air travel and outer space.

**Sat. Feb. 22, 8PM**

**Sun. Feb. 23, 2:30PM**

M&T BANK CLASSICS

**MENDELSSOHN'S VIOLIN**

Gunther Herbig, *conductor*  
 Benjamin Beilman, *violin*  
 MENDELSSOHN Violin Concerto  
 BRUCKNER Symphony No. 8

**Thurs. Feb. 27, 7:30PM**

FREE CONCERT

**SIDE-BY-SIDE WITH THE GREATER BUFFALO YOUTH ORCHESTRA**

Matthew Kraemer and Gerard Floriano, *conductors*

visit [bpo.org](http://bpo.org) for more details



Chris Botti

**Sat. Mar. 1, 8PM**  
**BLUECROSS BLUESHIELD POPS**  
**THE BEATLES**  
**CLASSICAL MYSTERY TOUR**

The long and winding road leads to Buffalo! The music of the Beatles comes to life as four talented artists, including Tony Kishman as Paul McCartney, join your BPO.

**Tues. Mar. 4, 7:30PM**  
**POLAR BEAR OBSESSION:**  
**AN EVENING WITH**  
**PAUL NICKLEN**

Presented by the Buffalo Zoo and Kleinhans Music Hall, National Geographic photographer and biologist Paul Nicklen shares stories and photographs from his career.

**Fri. Mar. 7, 10:30AM**  
**Sat. Mar. 8, 8PM**  
**M&T BANK CLASSICS**  
**BEETHOVEN'S FIFTH**

Lawrence Rachleff, *conductor*  
 Elissa Lee Koljonen, *violin*  
 GINASTERA Variaciones concertantes  
 PIAZZOLA Four Seasons of Buenos Aires  
 BEETHOVEN Symphony No. 5

**Fri. Mar. 14, 8PM**  
**THE CHIEFTAINS**

Six-time Grammy award winners The Chieftains join your BPO to kick off Buffalo's St. Patrick's Day festivities. Celebrate the sounds of the Emerald Isle in the most exuberant concert of the season with Ireland's best-known band.



The Chieftains

**Sat. Mar. 15, 8PM**  
**BLUECROSS BLUESHIELD POPS**  
**CHRIS BOTTI**

Matthew Kraemer, *conductor*  
 The wait is over! Trumpet superstar Chris Botti returns to Western New York with his unique fusion of rock, pop, jazz and Latin music in one of the hottest and most anticipated concerts of the season.  
 To purchase tickets to the pre-concert Pops Party, call (716) 242-7825

**Sun. Mar. 16, 2:30PM**  
**BPO KIDS**  
**KNIGHTS, PRINCESSES**  
**AND FAIRY TALE ROYALTY**

Matthew Kraemer, *conductor*  
 Come dressed as your favorite fairy tale character and hear the BPO perform music from *Cinderella*, *Romeo and Juliet*, *Beauty and the Beast*, and more.

**Sat. Mar. 22, 8PM**  
**Sun. Mar. 23, 2:30PM**  
**M&T BANK CLASSICS**  
**SONGS OF MAHLER**  
**AND BARBER**

JoAnn Falletta, *conductor*  
 Heidi Grant Murphy, *soprano*  
 VAUGHAN WILLIAMS Overture to *The Wasps*  
 BARBER Knoxville: Summer 1915  
 MAHLER Symphony No. 4

**Fri. Mar. 28, 8PM**  
**BPO ROCKS**  
**AMERICA**

Celebrate the music of this classic-rock favorite as you've never heard it before – live with a full orchestra.

**Sat. Mar. 29, 8PM**  
**Sun. Mar. 30, 2:30PM**  
**M&T BANK CLASSICS**  
**EAST MEETS WEST**



Matthew Kraemer, *conductor*  
 Wu Man, *pipa*  
 Women of Buffalo Philharmonic Chorus  
 GRIFFES The Pleasure Dome of Kubla Kahn  
 ZHAO JIPING Pipa Concerto (NY premiere)  
 BORODIN In the Steppes of Central Asia  
 DEBUSSY Nocturnes

**Thurs. Apr. 4, 7:30PM**  
**NEGLIA BALLET ARTISTS**  
**WITH THE BPO AT SHEA'S**  
**ROMEO AND JULIET**

For tickets, visit [www.sheas.org](http://www.sheas.org) or call (800)745-3000.

**Sat. Apr. 5, 8PM**  
**BLUECROSS BLUESHIELD POPS**  
**ELLIS HALL'S**  
**TRIBUTE TO RAY CHARLES**

Ray Charles changed the face of popular music with his blend of gospel, rhythm and blues, jazz and soul. Ellis Hall, lead singer and keyboardist of Tower of Power, electrifies audiences with his tribute to an icon.

**Sun. Apr. 6, 2:30PM**  
**BPO KIDS**  
**EARTH DAY CELEBRATION**

Celebrate Earth Day and hear great music inspired by some of your smallest friends: the bugs, butterflies and creatures in your garden.

**Fri. Apr. 11, 10:30AM**  
**Sat. Apr. 12, 8PM**  
**Sun. Apr. 13, 2:30PM**  
**M&T BANK CLASSICS**  
**JOURNEY ON THE RHINE**

JoAnn Falletta, *conductor*  
 Michael Ludwig, *violin*  
 WEBERN Im Sommerwind  
 KORNGOLD Violin Concerto  
 SCHUMANN Symphony No. 3, "Rhenish"

**Fri. Apr. 25, 8PM**  
**BPO ROCKS**  
**LOU GRAMM –**  
**THE VOICE OF FOREIGNER**

Brent Havens, *conductor*  
 Lou Gramm led Foreigner to superstardom and found success on his own with chart-toppers like "Midnight Blue." He joins the BPO for his first-ever symphonic tour.

**Sat. Apr. 26, 8PM**  
**Sun. Apr. 27, 2:30PM**  
**M&T BANK CLASSICS**  
**DRUMS ALONG THE**  
**NIAGARA: MAMBO!**

JoAnn Falletta, *conductor*  
 Colin Currie, *percussion*  
 MOROSS Symphony No. 1  
 RUSSELL Platt Euridice  
 JENNIFER Higdon Percussion Concerto  
 BERNSTEIN Symphonic Dances from *West Side Story*

**Wed. Apr. 30, 7PM**  
**FREE CONCERT**  
**SIDE-BY-SIDE**  
**WITH THE BUFFALO**  
**ACADEMY OF VISUAL**  
**AND PERFORMING ARTS**

Matthew Kraemer, *conductor*



Matt Catingub

**Thurs. May 1, 7pm**

KNOW THE SCORE

## STRAVINSKY'S PETRUSHKA

Ben Rous, *conductor*

Petrushka, an archetypal Russian folk puppet, is the eternal jester at the country fair. The realistic and magical facets of this story are brought to life through Stravinsky's music.

**Sat. May 3, 8PM**

BLUECROSS BLUESHIELD POPS

## BIG BAND SALUTE WITH MATT CATINGUB

Take the A train to hear big band music with a twist. Matt Catingub puts his own spin on the music of Count Basie, Dizzy Gillespie, Ella Fitzgerald, Rosemary Clooney and more. It's the perfect way to swing into spring!

**Sun. May 4, 2:30PM**

BPO KIDS

## GET UP AND DANCE

Tap your toes, groove to the beat, sway with the maestro and get up on your feet!

**Sat. May 10, 8PM**

**Sun. May 11, 2:30PM**

M&T BANK CLASSICS

## INVITATION TO THE DANCE

JoAnn Falletta, *conductor*

Roman Mekinulov, *cello*

RAVEL *La Valse*

MIGUEL DEL AGUILA *Concierto Tango*  
(WORLD PREMIERE)

RACHMANINOFF *Symphonic Dances*



Roman Mekinulov



**Fri. May 23, 10:30AM**

**Sat. May 24, 8PM**

BLUECROSS BLUESHIELD POPS

## STAR SPANGLED POPS

Matthew Kraemer, *conductor*

Buffalo Philharmonic Chorus

Join your BPO and the Buffalo Philharmonic Chorus for a patriotic tradition as we honor those who have served our country and pay tribute to the American spirit.

**Sat. May 31, 8PM**

**Sun. June 1, 2:30PM**

M&T BANK CLASSICS

## RUSSIAN RHAPSODY

JoAnn Falletta, *conductor*

Jon Kimura Parker, *piano*

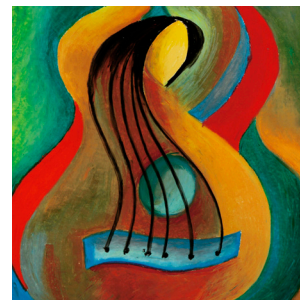
TCHEREPNIN, N. *Prelude to*  
*The Far-Away Princess*

RACHMANINOFF *Rhapsody on a Theme*  
*of Paganini*

TCHAIKOVSKY *Symphony No. 6,*  
*Pathetique*

**Sat. June 7, 7:30PM**

## JOANN FALLETTA INTERNATIONAL GUITAR CONCERTO COMPETITION



The rising stars of the classical guitar world face off in the finals of the biennial competition. Presented by the BPO and WNED.

**Sun. June 8, 2:30PM**

SLEE HALL, UNIVERSITY  
AT BUFFALO NORTH CAMPUS

## JUNE IN BUFFALO FESTIVAL

JoAnn Falletta, *conductor*

For tickets, call (716) 645-2921.

*Did you know... ticket sales cover only 37% of the Buffalo Philharmonic's annual operating budget? Please consider a gift to the BPO Annual Fund to support the music and musicians you hear, enrich the cultural life of Western New York, and sustain an organization that has been at the heart of the Buffalo arts community for nearly 80 years.*

*For more information, or to make a tax-deductible gift to the BPO, please contact us at:*

(716) 242-7829

donate@bpo.org or visit bpo.org

Strong, rhythmic beats...

that's music to our  
finely tuned ears.



Kenmore Mercy Hospital • Mercy Hospital of Buffalo • Sisters of Charity Hospital •  
Sisters of Charity Hospital, St. Joseph Campus • Continuing Care • Home Care

To learn more, visit [chsbuffalo.org](http://chsbuffalo.org) or call (716) 447-6205.

COMING TO AMHERST IN 2014



THE GLEN  
LUXURY APARTMENT HOMES

Uniland's Luxury Apartment Home Community  
Adjacent to Sheridan Meadows Corporate Park  
(at Sheridan & Transit)

(716) 512-6420  
[www.TheGlenLuxuryApartments.com](http://www.TheGlenLuxuryApartments.com)



## Parking — KLEINHANS MUSIC HALL LOTS \$5

### Shuttle Service and BPO Preferred Restaurants NEW this season!

**Shuttle Service from D'Youville College** Park and ride from D'Youville College Lot D, 430 West Avenue for all Saturday performances. The lot is less than a quarter of a mile away and provides a quick and easy way to get to the hall without walking. Parking is free and shuttle service is \$2 per person. Shuttle service begins at 6:30PM and ends 30 minutes after the conclusion of the concert. Parking may be available for other dates. Please join our email club at [bpo.org](mailto:bpo.org) or call the Box Office for updated information.

**Buffalo Yacht Club Dinner package** Enjoy dinner, the concert, parking and the shuttle to and from the concert for just \$89. Park at the D'Youville lot – shuttle leaves at 5:30 for the Yacht Club and will bring you back to the D'Youville lot after the concert. For reservations, call (716) 885-5000 and select option 6.

**Price Rite North Street Lot** FREE parking for Saturday and Sunday concerts in the Price Rite lot located at 253 North St. at College St., for 200 vehicles. This is a comfortable walking distance to the Hall.

## SALVATORE'S SYMPHONY SHUTTLE \$10

**Salvatore's Italian Gardens** at Transit and Genesee in Depew offers shuttle service at the rear corner of their parking lot for just \$10. This is a convenient and great way to avoid traffic or parking hassles. Simply call the reservation hotline at (716) 885-5000 and press 4 to reserve your place. Start your evening with a gourmet dinner at Salvatore's before the concert, selecting from a prix fixe "Symphony Menu" for \$29.95.

### Call (716) 683-7990 for dinner reservations.

Dinner and shuttle sold separately. The shuttle leaves promptly at 7 PM from the rear of the lot near the water tower.

**Henry's Restaurant** Enjoy dinner at Henry's, located on the ground floor of Kleinhans Music Hall, before evening BPO concerts. For more information, or to make reservations, call (716) 881-4438.

**31 Club** at 31 N. Johnson Park and Elmwood Ave. in Buffalo, offers a prix fixe dinner menu and complimentary shuttle service to and from Kleinhans on all concert nights. Call (716) 332-3131 for reservations or more information.



YACHT CLUB LOT  
@ Maryland St.  
and Prospect Ave.

31 CLUB LOT  
@ 31 N. JOHNSON PARK  
@ S. Elmwood Ave.



This series of free concert preview talks led by Maestro Paul Ferington is offered at three branches of the Buffalo & Erie County Public Library System – a lunchtime presentation at the Central Library Downtown (main floor - Ring of Knowledge), and presentations at the Amherst-Audubon and Orchard Park libraries (Community Rooms).

We are pleased to be able to present these concert previews at no cost to you in collaboration with the Buffalo & Erie County Public Library System. Visit [bpo.org](http://bpo.org) for more information.

## 2013-2014 SCHEDULE

- **Concerto Magic**  
 Wed. Sept. 25  
 12PM AT CENTRAL AND 6:30PM ORCHARD PARK  
 Wed. Oct. 27 AUDUBON, 7PM
- **The Legacy of Legends**  
 Wed. Oct. 16  
 12PM AT CENTRAL AND 6:30PM ORCHARD PARK  
 Wed, Oct. 23 AUDUBON, 7PM
- **A Season of Miracles**  
 Wed. Nov. 6  
 12PM AT CENTRAL AND 6:30PM ORCHARD PARK  
 Wed, November 13 AUDUBON, 7PM
- **Symphonic Monuments**  
 Wed. Feb. 12  
 12PM AT CENTRAL AND 6:30PM ORCHARD PARK  
 Wed. Feb. 19 AUDUBON, 7PM
- **The Rhine and the East**  
 Wed. Mar. 12  
 12PM AT CENTRAL AND 6:30PM ORCHARD PARK  
 Wed. Mar. 19 AUDUBON, 7PM
- **Russian Rhapsody**  
 Wed. Apr. 30  
 12PM AT CENTRAL AND 6:30PM ORCHARD PARK  
 Wed. May 7 AUDUBON, 7PM

### Bring your Group to the BPO

Experience the Buffalo Philharmonic in one of the world's most renowned concert venues, Kleinhans Music Hall. We invite your group to join us and experience the passion and excitement of YOUR Grammy Award-winning BPO.

The BPO offers a wide array of Classics, Pops, Rock, Family, Educational concerts and seasonal music. Concerts are presented mornings, afternoons and evenings, on weekdays and weekends. Find the show that appeals to you and let Group Services “roll out the red carpet” for you. The Buffalo Philharmonic has something to fit every group's musical taste and budget.

### Personal Service

We'll work with you to make your event fit your budget and insure that your group will have fun! From suggesting pre-concert dinner locations to finding transportation, we provide hands-on service to make your trip to Kleinhans as easy as it can be.

### A Better Way to Conduct Business

A day or evening with your BPO can be a great way for your business or organization to entertain employees, clients and friends. Customized packages are available, including amenities from a private cocktail area to a full sit-down dinner. Become one of the many Western New York not-for-profits that team up with the BPO for your next fund raiser. Contact Mike Giambra, Director of Sales and Patron Services at (716) 242-7815 or [mgiambra@bpo.org](mailto:mgiambra@bpo.org) to make your plans today.

### Savings

Groups can save up to 20 percent off regular ticket prices, and the handling and processing fees on each ticket are waived.

### Backstage Tours

Behind-the-scenes tours of historic Kleinhans Music Hall can be arranged (based upon availability).

### Meet-and-Greet

Meet with JoAnn Falletta and your favorite guest artists before or after the concert (based upon availability).

### Flexible Payment Plans

Our goal is to make planning your trip as easy as possible, so payment plans are arranged on an individual basis.

### Custom Day Packages for Matinee Shows

From lunch or dinner after the concert, to tours at Western New York cultural sites, let us make the arrangements for a great day out.

### Coffee Concerts

One of our most popular group options is our Friday morning Coffee Concerts. For our 2013-2014 season, we have 9 Fridays mornings from which to choose. Coffee concerts begin with complimentary coffee, donuts, bagels, and/or pastries at 9:30AM in the Mary Seaton Room. Join your friends and mingle with the conductor, musicians and guest artists before the concert begins at 10:30AM.

**Have questions? Ready to order?**  
 Call group sales at (716) 885-5001  
 or email [groupsales@bpo.org](mailto:groupsales@bpo.org).

# Concert Information

Kleinhans Music Hall opens 90 minutes before the concert is scheduled to begin, or earlier depending on pre-concert activities. All performances begin promptly at the designated time.

## HANDICAPPED SEATING/ASSISTANCE

Patrons requiring special assistance are urged to contact the Box Office prior to attending the concert. Handicapped seating is located on the main floor on the outside aisles from rows A-CC. Handicapped parking is available. Please notify the parking attendant upon arriving of your needs. Hearing Assistance Devices are available at the coat check. Please note, there is no elevator to the balcony level.

## CAMERAS AND RECORDING DEVICES

Photography is permitted in the hall before and after concerts, but all devices must be turned off during a concert. It is strictly forbidden to record or photograph a concert, as it presents a distraction to the musicians and other patrons.

## LATE ARRIVALS

Patrons arriving after the performance has started will be seated at the discretion of the House Manager. Seating will not be until the first suitable break or at intermission. Note that late seating may not be in the purchased location.

## MEDICAL /SECURITY

Security staff is available at all times and an EMT is on site for all concerts and performances. Please notify an usher or staff member if there is a medical or security need.

Kleinhans Music Hall maintains a smoke-free environment. All programs and artists are subject to change without notice. Sorry, no refunds or exchanges on single ticket purchases.

# BPO MASTER CLASSES



The Buffalo Philharmonic Orchestra hosts incredible guest artists each year on our M&T Bank Classics and Blue Cross Blue Shield Pops Series. Now, we are making many of these masters available to the community in a new Masterclass series. For more information please visit [bpo.org](http://bpo.org).

### RICARDO MORALES

*Clarinet*

**Wed. Oct. 16, 7-8:30PM**

*Featured on:*  
Mozart's Clarinet Concerto  
Oct. 19-20

### SIMONE DINNERSTEIN

*Piano*

**Wed. Nov. 20, 7-8:30PM**

*Featured on:*  
Beethoven's Piano Concerto No. 2  
Nov. 22-23

### ELISSA LEE KOLJONEN

*Violin*

**Thurs. Mar. 6, 7-8:30PM**

*Featured on:*  
Piazzolla's  
*Four Seasons of Buenos Aires*  
Mar. 7-8

### COLIN CURRIE

*Percussion*

**Sat. Apr. 26, 7-8:30PM**

*Day of Percussion in partnership  
with Buffalo State College*

*Featured on:*  
Jennifer Higdon's  
Percussion Concerto  
Apr. 26-27

### ROMAN MEKINULOV

*Cello*

**Thurs. May 29, 7-8:30PM**

*Featured on:*  
WORLD PREMIERE  
Miguel Del Aguila's  
*Concierto Tango*  
May 10-11

# Musically Speaking

One hour prior to Saturday and Sunday Classics series concerts, join music director JoAnn Falletta, guest artists, conductors and members of the BPO for this free, informative and entertaining series of discussions. They'll discuss the music and the evening's performance and take questions from the audience. It's the perfect time to learn more about what's behind the music you are about to hear. For more information, visit [bpo.org](http://bpo.org) or call the Box Office at (716) 885-5000.

Musically Speaking begins at 7PM Saturdays and 1:30PM Sundays and is sponsored by

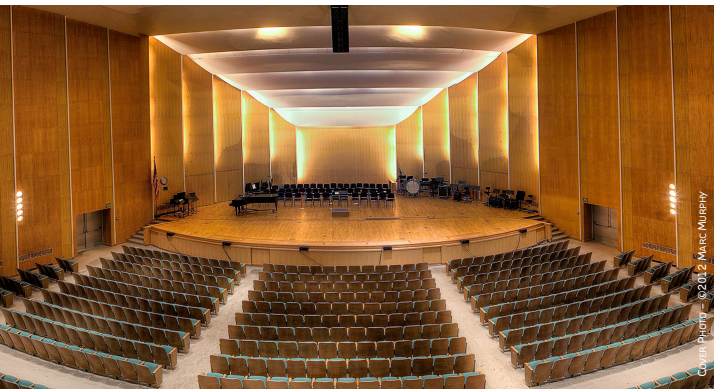


Photo by © 2012 Marc Murphy

# BPO Patron Appreciation

We are very grateful to our dedicated subscribers and donors. In appreciation of your support, the BPO offers several private post-concert events and open rehearsals throughout the season, and welcomes your attendance.

## Events for donors:

### Open Rehearsal One Singular Sensation: A Tribute to Marvin Hamlisch

Sat. Nov. 9, 1PM

### Open Rehearsal Beethoven's Fifth

Thurs. Mar. 6, 10AM

### Open Rehearsal Invitation to the Dance

Thurs. May 8, 10AM



Please contact **Mike Giambra**, *Director of Sales and Patron Services*, with any questions regarding post-concert events at (716) 242-7815.

For questions regarding open rehearsals, please contact **Kelly Campbell**, *annual fund coordinator*, at (716) 242-7829.

## Events for subscribers:

### Subscriber Appreciation Post-Concert Party Classical Mystery Tour

Sat. Mar. 1

### Subscriber Appreciation Post-Concert Party Beethoven's Fifth

Sat. Mar. 8

## Events open to both donors and subscribers:

### Post-concert Valentine's Day Dance

Sat. Feb. 15

### Donor and Subscriber Appreciation Concert

Wed. May 28, 7:30PM



## Does your school come to the BPO Youth Concert Series?

Each year, the BPO performs more than 20 concerts for school children across Western New York.

The Youth Concert Series is developed with the assistance of music teachers and curriculum writers. Concerts are designed to introduce students to the best orchestral repertoire in an engaging and informative way.

By linking music to language arts, social studies and other disciplines, these concerts strive to show how music education is intertwined with all areas of study.

Students from pre-kindergarten to high school can experience the BPO in an age-appropriate concert.

Youth concerts happen throughout the year at Kleinhans Music Hall, as well as outreach concerts as far away as Olean and Lockport.

Tickets are only \$6 per student, with free chaperone tickets for every 15 purchased. For more information on this year's Youth Concert Series, and to make a reservation for your school, visit our website!

**Music for youth**

Presented by  **FIRST NIAGARA**

[www.bpo.org/education](http://www.bpo.org/education)

BPO performs at the  
*Spring For Music Festival*  
at Carnegie Hall.



## Get to know your BPO

“Surveying (Carnegie) Hall packed with Buffalonians, Music Director JoAnn Falletta said, “If you have an orchestra more beloved than the BPO, I can’t imagine it.”

— THE BUFFALO NEWS

- The BPO’s *Spring For Music* at Carnegie Hall performance was broadcast and streamed live, garnering thousands of listeners from Japan, Germany, Russia and all over the United States.
- In 2013, the BPO won an ASCAP Award for Adventurous Programming, the second since JoAnn Falletta started her tenure as the BPO’s music director.
- The Buffalo Philharmonic was instrumental in preserving the legacy of composer Marcel Tyberg, who died in Auschwitz. In November 2012, JoAnn Falletta traveled to Croatia to conduct the Croatian National Orchestra as part of a festival naming Tyberg as the national composer of Croatia.
- The Buffalo Philharmonic Orchestra maintains a robust recording program that includes releases on the international classical music label Naxos and on the orchestra’s own label, Beau Fleuve (see page 27 for a list of available recordings).
- More than 42,000 students were served by the BPO’s youth concerts and education programs in the 2012-13 season.
- In the past three years, 34,500 students have been able to watch a BPO education concert in their classrooms thanks to a partnership between the orchestra, Time Warner Cable, and BOCES.
- In 225 cities across the U.S., BPO concerts are aired via American Public Radio’s program, *Performance Today*. They reach millions of listeners, raising Buffalo’s profile nationwide.
- In the 2013-14 season, the BPO will present its 18th world premiere piece by a major composer. Past world premieres include works by Milton Babbitt, Ferde Grofe and Lukas Foss.
- Kleinhans Music Hall is one of the only American concert halls located in a residential neighborhood, and one of only ten structures in Erie County to have National Historic Landmark status.
- Kleinhans was designed by Finnish architects Eliel and Eero Saarinen. Among the architects’ other famous commissions are the St. Louis Gateway Arch and the TWA terminal at New York City’s JFK airport.
- The Buffalo Philharmonic Orchestra has an annual operating budget of \$10 million, 92 percent of which is recycled in Western New York.
- The BPO supports 100 full-time jobs and 300 part-time jobs with a combined payroll of \$7.7 million.
- Americans for the Arts measures the BPO’s annual economic impact on the community at more than \$25 million.

# Your BPO on the go

While Western New Yorkers enjoy the BPO in person, classical music lovers worldwide experience the BPO through its many recordings. BPO CDs are available for purchase by visiting the Kleinhans Box Office, or online at [tickets.bpo.org](http://tickets.bpo.org). The price is \$15 excluding tax.



## New this year!

- *Russian Masterworks*
- *Duke Ellington: Black, Brown and Beige*
- *In the Heart of Europe*, with works by Brahms and Kodály
- *Gershwin: Rhapsody in Blue*

## Also available:

- *Burchfield Gallery: A Tribute to Charles Burchfield*  
Featuring Sibelius' Symphony No. 2 and Gould's Burchfield Gallery.
- *Church Windows*  
Featuring works by Respighi.
- *Death and the Maiden*  
Featuring Schubert's Death and the Maiden string quartet and Unfinished Symphony.
- *Der Rosenkavalier*  
Featuring Richard Strauss' Suite from Der Rosenkavalier and other works.
- *Fairy Tale*  
Three works by the Czech composer Joseph Suk.
- *Gershwin*  
Pianist Orion Weiss joins the BPO on this performance of some of Gershwin's most iconic works.
- *Great Performances Schreker / Rimsky-Korsakov*  
JoAnn Falletta conducts Rimsky-Korsakov's Sheherazade and Franz Schreker's Prelude to a Drama.
- *Holiday Classical Favorites*  
Music by Corelli, Tchaikovsky, Handel, and others.
- *Holiday Pops*  
Conducted by Marvin Hamlisch, this CD features music by Leroy Anderson, Schubert, and others.
- *Impressions of French music*  
Works by Satie, Debussy and Ravel.
- *Mr. Tambourine Man*  
This Grammy award winning CD features works by John Corigliano, inspired by Bob Dylan.
- *Pictures at a Gallery*  
Featuring works by Berlioz, Rachmaninoff, and Reger.
- *Polish Masterworks*  
Music by iconic Polish composers.
- *Prairie Music*  
Aaron Copland's Prairie Journal, Rodeo, Letter from Home and The Red Pony.
- *Rachmaninoff and Rossini*  
Rachmaninoff's Symphony No. 2 in E Minor and Rossini's Overture to Semiramide are featured on this disc.
- *Rhapsodie*  
Featuring works by Massenet, D'Indy, Ravel and Debussy.
- *The Mystic Trumpeter*  
Three works by Frederick Shepherd Converse.
- *The Pleasure Dome of Kubla Khan*  
Seven works by Charles Griffes.
- *The Red Violin*  
Two works by John Corigliano.
- *Tyberg*  
Featuring works by Marcel Tyberg, a composer who died in Auschwitz. The Buffalo Philharmonic gave his Symphony No. 3 its premiere performance decades after his death.
- *Variations on a Nursery Song*  
Music by Erno von Dohnanyi.

*The BPO is very grateful for the generosity of its series sponsors.*

 **M&T Bank** Classics Series

 **BlueCross BlueShield of Western New York** Pops Series

**Music for youth** Presented by  **FIRST NIAGARA**

 **DELTA** The official airline of the BPO for the 2013-14 season.

*If you are interested in becoming a series of concert sponsor, please contact Wendy Diina at (716) 242-7826 or [wdiina@bpo.org](mailto:wdiina@bpo.org)*

## Did you know?

- ... that high school and college students can purchase tickets to most M&T Bank Classics concerts for only \$10? The Student Pass is also available for \$29 which offers a best available student seat when it is shown at the box office.



High School students: Check out the Symphony Scholars program. It's your backstage pass to the BPO! For information, go to: [www.bpo.org/symphonyscholars](http://www.bpo.org/symphonyscholars)

- ... that the BPO shines the spotlight on school and community performance groups before Kleinhans concerts throughout the season? Over 20,000 students have performed in the BPO Community Spotlight Program which is celebrating its 20th Anniversary this year!



- ... that the BPO honors music educators and those who support music education in our schools in an awards ceremony at Kleinhans each year? This season the education community will celebrate together on May 10th, 2014.

## healthy (hel-THē)

Most dictionaries define healthy as “not being sick.”

But at BlueCross BlueShield of Western New York, we think it's time to redefine it.

With new programs, new thinking, and new approaches to health care and how it's delivered.

We're even rolling out innovative new products designed to improve quality of care and control rising costs. One of these products is **align**, the result of our partnership with Kaleida Health.

We're redefining healthy for the better. To find out what that means for you, visit us at [bcbswny.com](http://bcbswny.com).



healthy changes everything:



**BlueCross BlueShield**  
of Western New York

A division of HealthNow New York Inc., an independent licensee of the BlueCross BlueShield Association.